

6

5

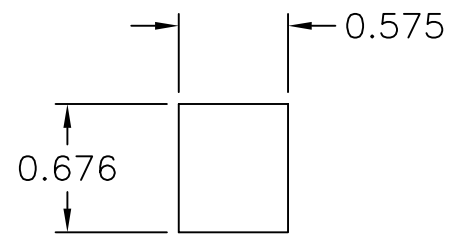
4

3

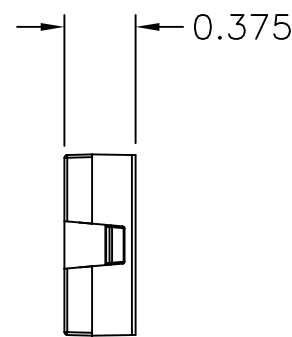
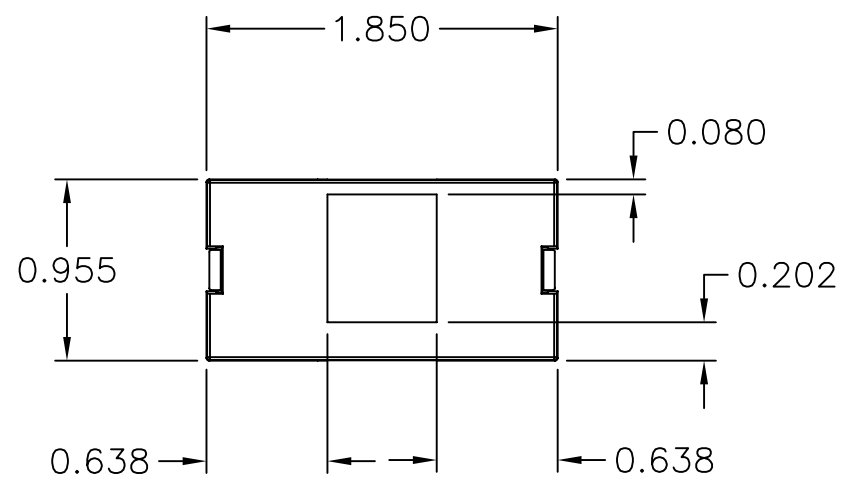
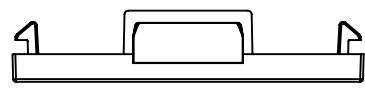
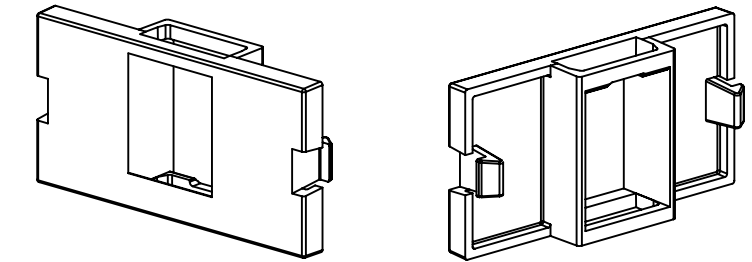
2

1

CATALOG NUMBER	COLOR	DESCRIPTION
IM1K1W	WHITE	MODULE, STRAIGHT 1U 1 PORT
IM1K1OW	OFFICE WHITE	MODULE, STRAIGHT 1U 1 PORT
IM1K1EI	ELECTRIC IVORY	MODULE, STRAIGHT 1U 1 PORT
IM1K1GY	GRAY	MODULE, STRAIGHT 1U 1 PORT
IM1K1BK	BLACK	MODULE, STRAIGHT 1U 1 PORT
IM1K1TI	TELCO IVORY	MODULE, STRAIGHT 1U 1 PORT
IM1K1AL	ALMOND	MODULE, STRAIGHT 1U 1 PORT




KEYSTONE OPENING



NOTES

UNLESS OTHERWISE SPECIFIED:

- 1. C-UL-US LISTED: E129878
- 2. SPECIFICATIONS SUBJECT TO CHANGE WITHOUT NOTICE

Created on AUTOCAD	DIMENSIONING AND TOLERANCE PER ANSI Y14.5M-1982 UNLESS OTHERWISE SPECIFIED, DIMENSIONS ARE IN INCHES (MM). TOLERANCES .XX = ±.01 (.25) .XXX = ±.005 (.127) .XXXX = ±.0025 (.0635) ANGLE TOL ±1°		PROJECT REFERENCE:		 <b>Hubbell Premise Wiring</b> HUBBELL INCORPORATED (Delaware) 14 Lord's Hill Road, Stonington, Connecticut 06378
	IN ACCEPTING OUR DRAWINGS, BLUEPRINTS, OR SUPPORTING DOCUMENTATION FOR QUOTATION OR OTHER PURPOSES, YOU AGREE NOT TO DISCLOSE TO OTHERS THE IDEAS, INFORMATION, OR DESIGNS SHOWN HEREIN, AND THAT YOU WILL MAKE NO USE OF SAME WITHOUT PERMISSION		MATERIAL:		
			DRAWN BY: P.S.MAGUIRE 02/23/2001		TITLE: INFINE STATION MODULE SINGLE PORT, STRAIGHT 1U
			CHECKED BY: H. McGREGOR 02/28/2001		SIZE: <b>C</b> DRAWING NO.: <b>C778787</b> REV.: <b>B</b>
		APPROVED BY: H. McGREGOR 02/28/2001		SCALE: <b>FULL</b> SHEET <b>1</b> OF <b>1</b>	

REV.	ECN	DATE	DESCRIPTION	CHG BY	APPD BY
B	5680	8/22/05	ADDED -AL CATALOG NUMBER	CD	
A	4148	02/23/01	INITIAL RELEASE	PSM	HKM